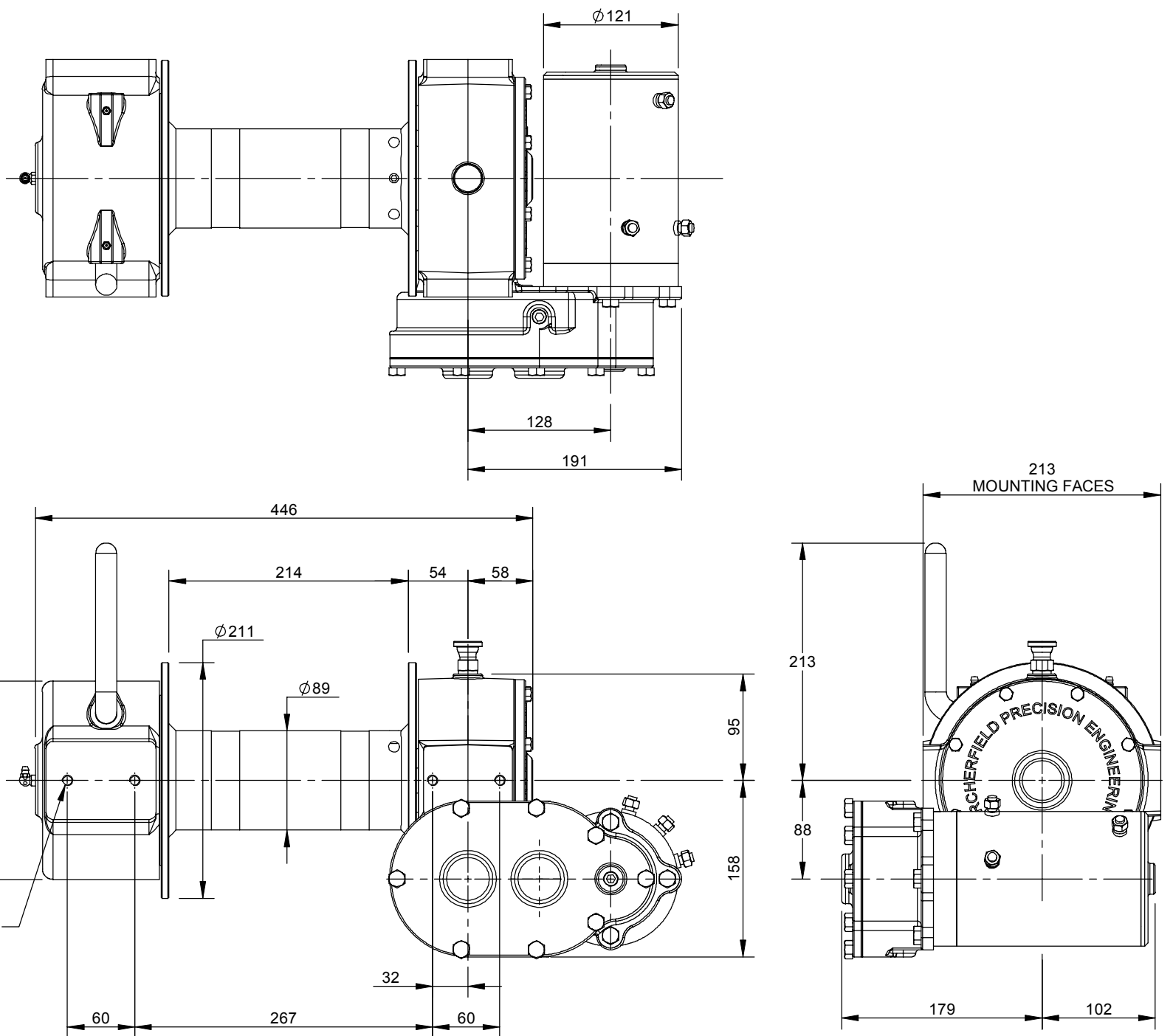


ITEM NO.	QTY.	Part Number	DESCRIPTION	LENGTH	ITEM NO.	QTY.	Part Number	DESCRIPTION	LENGTH
56	1		GREASE NIPPLE 1/4" UNC 90 Degree		1	1	W8-0101	WORMBOX HOUSING	
57	2		GREASE NIPPLE 1/4" UNC STRAIGHT		2	3	W8-0700	BUSH - WORMBOX HOUSING	31.8
58	8		HEX HEAD BOLT 1/4"-20 UNC x 1"		3	1	W8-0551	1 1/4" DRUM SHAFT - 3.5" x 9" DRUM	419.1
59	6		HEX HEAD SET SCREW 5/16"-18 UNC x 3/4"		4	2		KEY - IMPERIAL	5/16" SQ x 1.115"
60	4		HEX HEAD SET SCREW 5/16"-18 UNC x 1"		5	1	W8-0440	WORMWHEEL HUB	28.6
61	1	W8-0920	BRACKET		6	1	W8-0420	WORMWHEEL	30.2
62	1	W8-0940	SOLENOID BOX ASSEMBLY		7	1	W8-0802	WORMBOX COVER GASKET	1
63	1	W8-0970	HAND CONTROLLER		8	1	W8-0151	WORMBOX COVER	

9	1	W8-0404	WORM - ELECTRIC	238.2
10	2		ANGULAR CONTACT BALL BEARING 7304-B 20*52*15	
11	1		KEY - IMPERIAL	3/16" SQ x 5/8"
12	1		Circlip DIN 471 - 19 x 1.2	
13	2	W8-0800	WORMSHAFT GASKET	Ø83.3
14	1	W8-0200	WORMSHAFT CAP - BLIND	
15	1	CR12340	OIL SEAL	1.25x1.75x0.25
16	2	W8-0640	DRAG BRAKE PAD	12
17	2	W8-0641	DRAG BRAKE SPRING	
18	2	W8-0702	DRUM BUSH 1 1/4" SHAFT	31.8
19	1	W8-0504	WINCH DRUM - 3.5" x 9"	228.6
20	1		SOCKET SET SCREW 3/8"-24 UNF x 7/16"	
21	1	W8-0590	DRUM SHAFT SPACER	7.1
22	2		KEY - IMPERIAL	5/16" SQ x 1 7/8"
23	1	W8-0251	DOG CLUTCH HOUSING	
24	1	W8-0610	DOG CLUTCH	45.0
25	1		1/4" BEARING BALL	
26	1	W8-0631	DOG CLUTCH DETENT SPRING	0.33
27	1		SOCKET SET SCREW 5/16"-18 UNC x 5/16"	
28	1	W8-0270	DOG CLUTCH FORK	
29	1	W8-0271	DOG CLUTCH HANDLE	315
30	1		SPRING PIN 1/4" x 1 1/8"	
31	1	W8-0901	REDUCTION GEAR CASE HOUSING	
32	1	W8-0903	MOTOR ADAPTOR GASKET	
33	1	W8-0902	HOUSING COVER	
34	1	W8-0904	ELECTRIC MOTOR ADAPTOR	58.3
35	1	W8-0930	ELECTRIC MOTOR - 12V	
36	1	CR7690	OIL SEAL	0.75x1.875x0.25
37	1	W8-0800	WORMSHAFT GASKET	Ø83.3
38	1	W8-0905	SPACER	11.1
39	1	CR7440	OIL SEAL	0.75x1.25x0.25
40	1	W8-0910	MOTOR PINION	28.5
41	1	W8-0911	IDLER PINION	22
42	2	W8-0912	IDLER GEAR	17.5
43	1	W8-0913	IDLER SHAFT	69.2
44	3	W8-0915	BUSH	12.7
45	8		HEX HEAD SET SCREW 3/8"-16 UNC x 1"	
46	3		HEX HEAD BOLT 3/8"-24 UNF x 1 1/4"	
47	3		PLUG - HEX SOCKET	1/4" BSPT
48	3		HEX NUT 5/16"-18 UNC	
49	1		SOCKET SET SCREW 1/4"-28 UNF x 5/16"	
50	3	W8-0916	THRUST WASHER	1.9
51	1		KEY - IMPERIAL	3/16" SQ x 1 1/2"
52	1		WOODRUFF KEY R B17.2-606	3/16" x 3/4"
53	4		SOCKET HEAD CAP SCREW 5/16"-18 UNC x 1 5/8"	
54	2		PLUG - HEX SOCKET	3/8" BSPT
55	1		BREATHER	3/8" BSPT



				ARCHERFIELD PRECISION ENGINEERING 2 COIN ST MOOROOKA QLD 4105 PHONE 07 3875 1568 FAX 07 3277 4316			DRAWN	RCT	05-08-09	8,000 LB WINCH		PROJECT No	
							CHECKED			ELECTRIC LEFT HAND			
							DESIGNED			Ø3.5" x 9" DRUM			
							TECH APP			WITHOUT WORMBRAKE		SHEET 1 OF 2	
				COPYRIGHT RESERVED. The design detailed on this drawing is the property of Archerfield Precision Engineering and must be returned on demand. It is issued on the strict condition that except with our written permission it must not be copied or communicated to any third party, nor is it to be used for any purpose other than for which it was issued.			A.P.E. APP			SCALE	WEIGHT	DWG No	- SHT - REV
DWG No	REFERENCES	REV	DATE	DESCRIPTION	DRAWN	CHECK	APPD		1:5	41.5 Kg		W8-0064-1-A	

