

# COMPACT HYDRAULIC W8-600 BASE MOUNT WINCH

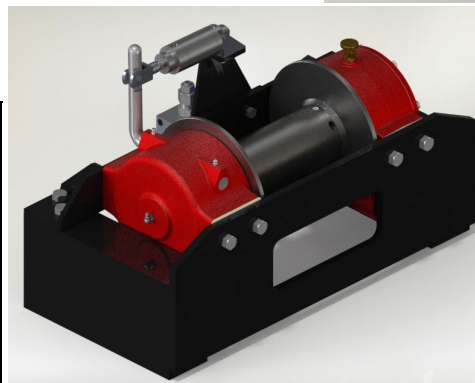
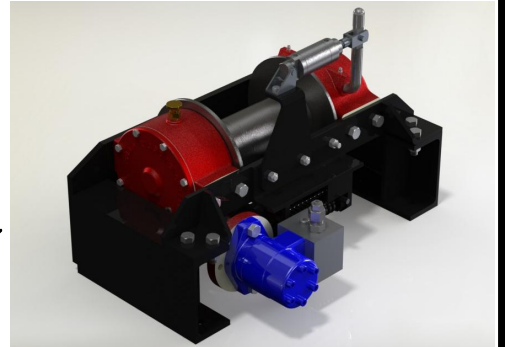
A compact, versatile, heavy duty winch mounted in a rugged frame.  
Easy replacement for planetary winches.  
Hydraulic drive with brake valve. Heavy loads can be lowered in safety.  
Lever operated dog clutch fitted with an air cylinder to allow remote operation.  
Drag brake on the drum to prevent wire rope ballooning when freewheeling.  
Spring loaded rope tensioner for even rope layering.

## SPECIFICATIONS

Capacity: 35.6 kN (8,000 lb)  
Weight: 63kg (without rope)  
Standard Ratio: 50:1  
Other ratios available: 25:1 30.5:1 40:1  
Rec. Wire Rope: 30m x Ø9mm  
Max Wire Rope: 69m x Ø9mm  
Hydraulic Oil Requirements 75 litre/min @ 122 bar

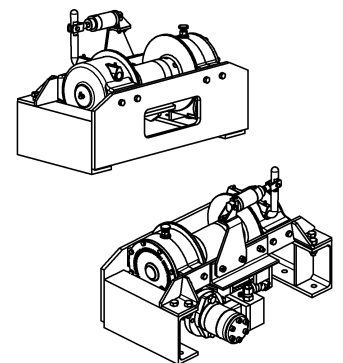
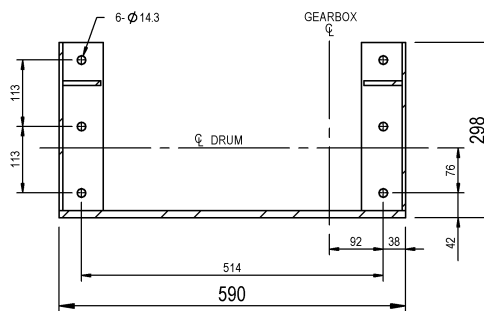
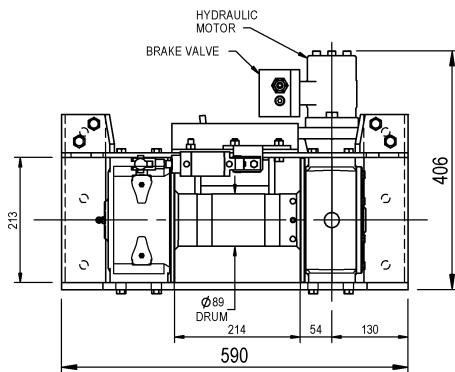


**PROUDLY MADE IN  
AUSTRALIA  
FULL 2 YEAR WARRANTY**

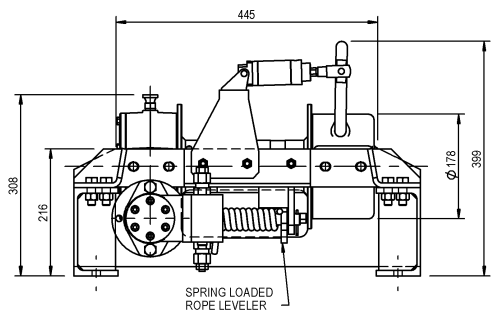
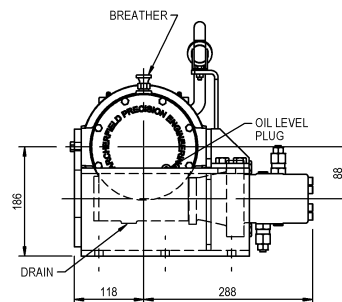
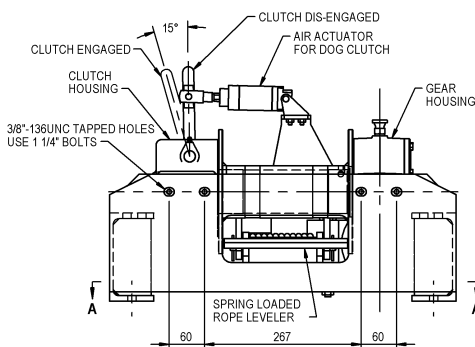


All our winches feature hardened and ground worms and bronze worm wheels for long service and reliability.

Layer	Line Pull kN	Line Speed @ 75 l/m m/min	Line Speed @ 55 l/m m/min	Total rope Length m
1	35.6	9.6	6.9	8.3
2	30.6	11.2	8.1	17.9
3	26.9	12.8	9.2	28.9
4	23.9	14.4	10.4	41.2
5	21.6	16.0	11.5	54.9
6	19.7	17.7	12.7	69.9



SECTION A-A  
HOLD DOWN DETAIL



Your Winch Distributor is:

**GEARS AND  
WINCHES**

**GEARS AND WINCHES**  
A registered trading name of  
Winch Industries Pty Ltd  
2 Coin Street  
Moorooka Qld 4105  
Ph: (07) 3875 1568  
F: (07) 3277 4316  
[www.winch.com.au](http://www.winch.com.au)