

A

B

C

D

E

F

G

H

A

B

C

D

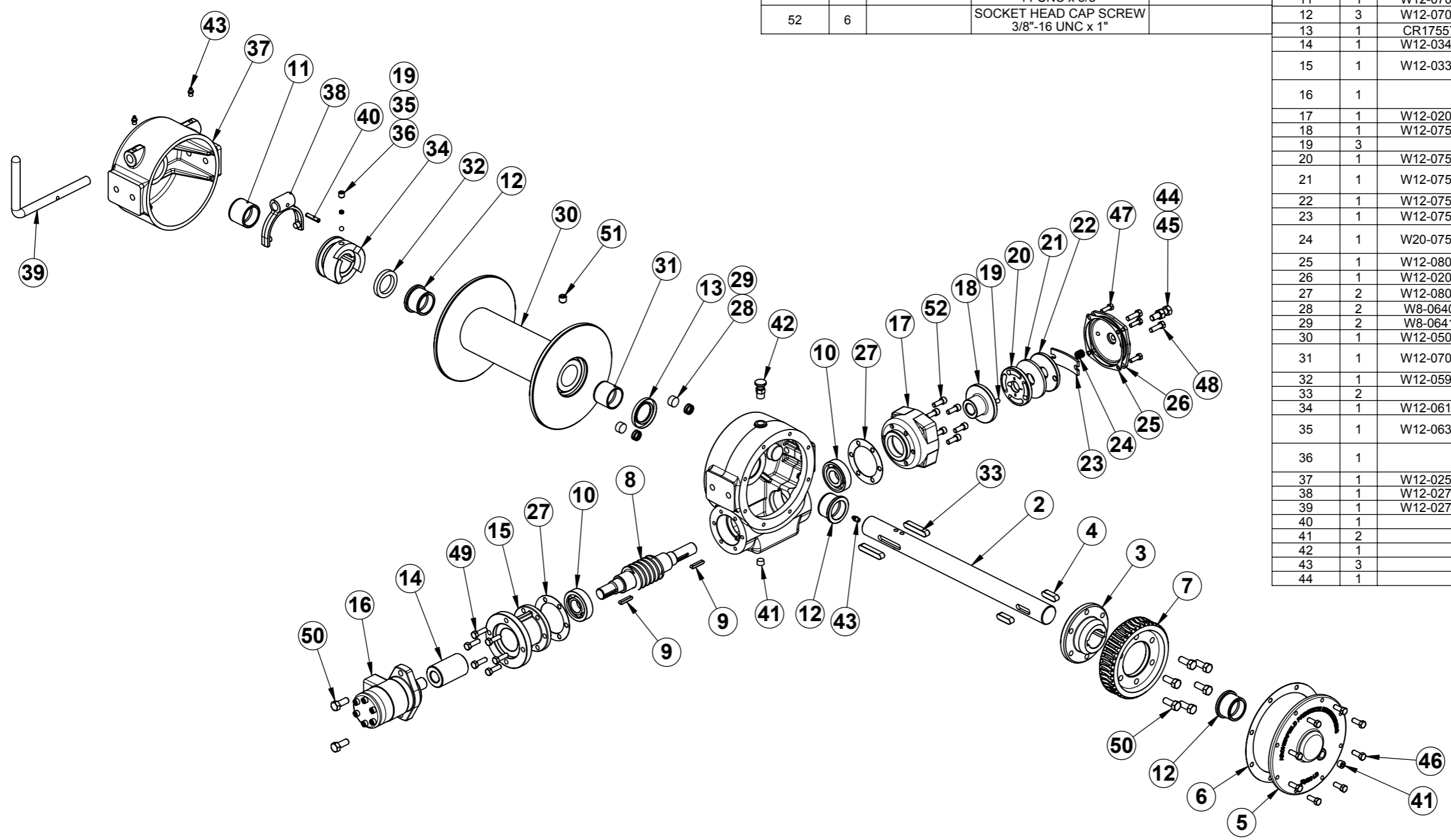
E

F

G

H

ITEM NO.	QTY	PART NUMBER	DESCRIPTION	LENGTH	ITEM NO.	QTY	PART NUMBER	DESCRIPTION	LENGTH
45	1		HEX HEAD SET SCREW 1/2"-13 UNC x 1 3/4"		1	1	W12-0101	WORMBOX HOUSING	
46	8		HEX HEAD SET SCREW 3/8"-16 UNC x 1"		2	1	W12-0520	DRUM SHAFT - STANDARD DRUM	568.3
47	4		HEX HEAD SET SCREW 5/16"-18 UNC x 1"		3	1	W12-0440	WORMWHEEL HUB	44.5
48	2		HEX HEAD SET SCREW 3/8"-24 UNF x 1 1/4"		4	2		KEY - IMPERIAL	1/2" SQ x 1.685"
49	6		HEX HEAD SET SCREW 3/8"-16 UNC x 1 1/4"		5	1	W12-0151	WORMBOX COVER	
50	8		HEX HEAD SET SCREW 1/2"-13 UNC x 1 1/4"		6	1	W12-0802	WORMBOX COVER GASKET	Ø236.5
51	1		SOCKET SET SCREW 5/8"-11 UNC x 5/8"		7	1	W12-0420	WORMWHEEL	
52	6		SOCKET HEAD CAP SCREW 3/8"-16 UNC x 1"		8	1	W12-0401	WORM - HYDRAULIC WITH BRAKE	293.7
					9	2		KEY - IMPERIAL	1/4" SQ x 1 1/2"
					10	2		ANGULAR CONTACT BALL BEARING 7306-B 30*72*19	
					11	1	W12-0703	CLUTCH HOUSING BUSH	44.5
					12	3	W12-0702	DRUM BUSH - CLUTCH END	38.1
					13	1	CR17557	OIL SEAL	1.75x2.75x0.3125
					14	1	W12-0340	HYDRAULIC COUPLING	82.6
					15	1	W12-0330	HYDRAULIC MOTOR ADAPTOR	
					16	1		SAM HYDRAULIC MOTOR BG S 100	
					17	1	W12-0202	WORMBRAKE HOUSING	
					18	1	W12-0750	WORMBRAKE HUB	Ø90 x 41.3
					19	3		3/8" BEARING BALL	
					20	1	W12-0751	WORMBRAKE CAM	Ø90 x 10
					21	1	W12-0752	WORMBRAKE FRICTION DISC	Ø90 x 6.4
					22	1	W12-0753	WORMBRAKE RETAINER	Ø90 x 8
					23	1	W12-0754	WORMBRAKE LEAF SPRING	84.7 x 34.9
					24	1	W20-0755	W16 W20 W30 WORMBRAKE COIL SPRING	
					25	1	W12-0801	WORMBRAKE CAP GASKET	Ø123.8
					26	1	W12-0203	WORMBRAKE CAP	
					27	2	W12-0800	WORM SHAFT CAP GASKET	Ø108
					28	2	W8-0640	DRAG BRAKE PAD	12
					29	2	W8-0641	DRAG BRAKE SPRING	
					30	1	W12-0500	W12 WINCH DRUM	
					31	1	W12-0701	DRUM WORMBOX END BUSH	42.9
					32	1	W12-0590	DRUM SHAFT SPACER	9.5
					33	2		KEY - IMPERIAL	1/2" SQ x 2 3/4"
					34	1	W12-0610	DOG CLUTCH	65.1
					35	1	W12-0631	DOG CLUTCH DETENT SPRING	0.23
					36	1		SOCKET SET SCREW 1/2"-20 UNF x 1/2"	
					37	1	W12-0251	DOG CLUTCH HOUSING	
					38	1	W12-0270	DOG CLUTCH FORK	
					39	1	W12-0271	DOG CLUTCH HANDLE	
					40	1		SPRING PIN 5/16" x 1 1/2"	
					41	2		PLUG - HEX SOCKET	3/8" BSPT
					42	1		BREATHER 3/8" BSPT	
					43	3		GREASE NIPPLE 1/8" BSP	
					44	1		HEX NUT 1/2"-13 UNC	



**GEARS AND WINCHES**  
 2 COIN ST MOOROOKA QLD 4105  
 PO BOX 206 ACACIA RIDGE QLD 4110  
 Ph (07) 3875 1568  
 Fx (07) 3277 4316  
 Email admin@winch.com.au

COPYRIGHT RESERVED. The design detailed on this drawing is the property of Archerfield Precision Engineering and must be returned on demand. It is issued on the strict condition that excepted to any third party, nor is it to be used for any purpose other than for which it was issued.

DRAWN	RCT	03-04-11
CHECKED		
MATERIAL		
MATERIAL NOTES		
FINISH		
DATE PRINTED	WEIGHT	SCALE
3/04/2011	59.8 Kg	1:10

**STANDARD WINCHES**  
**W12 HYDRAULIC LOW MOUNT WINCH**  
**WITH WORMBRAKE**  
**FOR MANUFACTURE**

DATE PRINTED: 3/04/2011 | WEIGHT: 59.8 Kg | SCALE: 1:10 | SHEET No: 1 OF 1 | DWG No: W12-0021-0