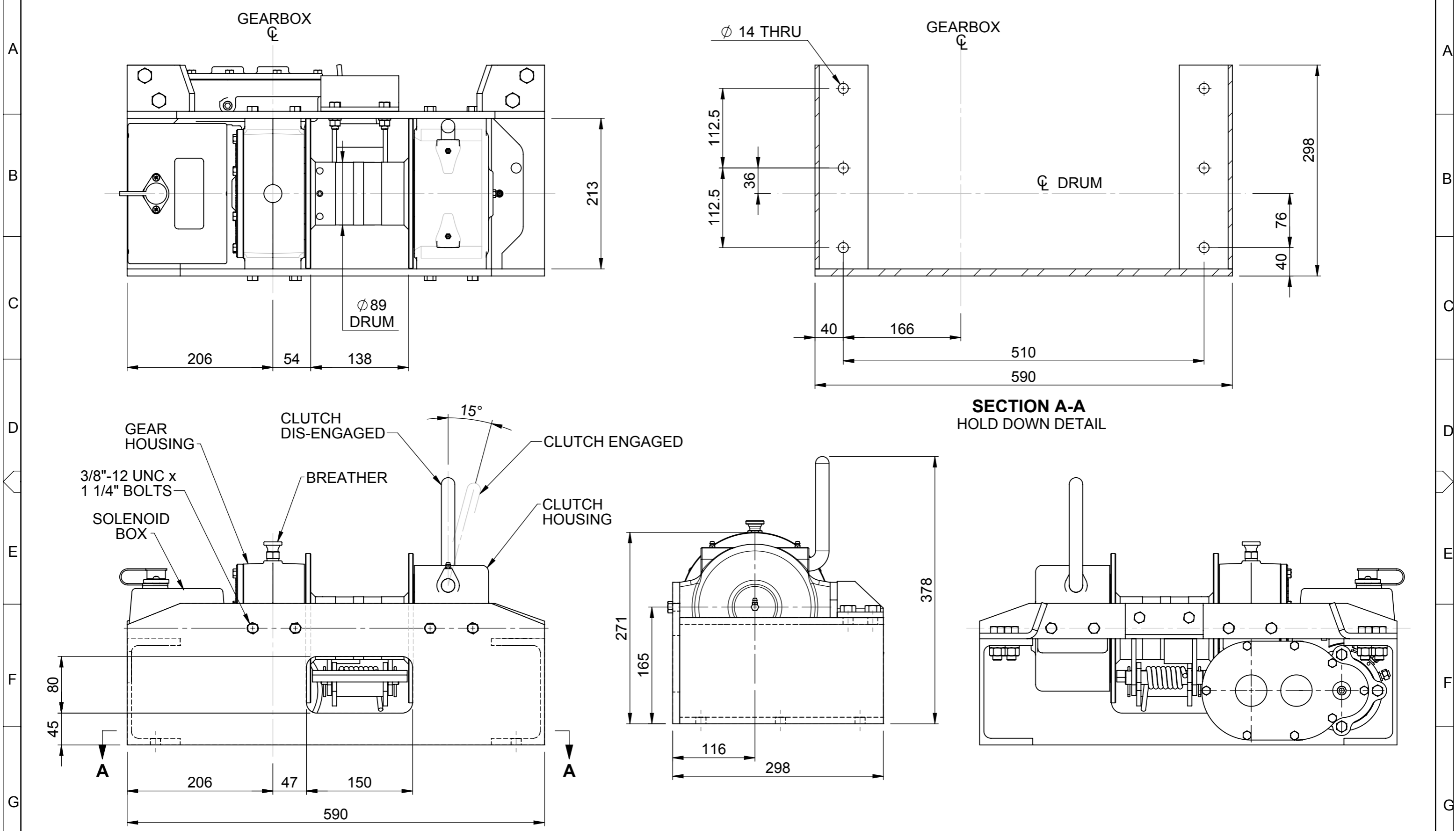


1 2 3 4 5 6 7 8 9 10 11 12



SECTION A-A
HOLD DOWN DETAIL

					<p>GEARS AND WINCHES 2 COIN ST MOOROOKA QLD 4105 PO BOX 206 ACACIA RIDGE QLD 4110 Ph (07) 3875 1568 Fx (07) 3277 4316 Email admin@winch.com.au</p>			DRAWN RCT 09-07-12 CHECKED MATERIAL MATERIAL NOTES FINISH		EW8-600 BASE MOUNT WINCH ELECTRIC LEFT HAND DN80 x 6" DRUM 12V or 24V DC MOTORS FOR MANUFACTURE			
					COPYRIGHT RESERVED. The design detailed on this drawing is the property of Archerfield Precision Engineering and must be returned on demand. It is issued on the strict condition that excepted with our written permission it must not be copied or communicated to any third party, nor is it to be used for any purpose other than for which it was issued.			DATE PRINTED 2/10/2012 WEIGHT 58.7 Kg SCALE 1:5 SHEET No. 1 OF 1 DWG No. EW8-0064-0		- REV			
DWG No	REFERENCES	REV	DATE	DESCRIPTION	DRAWN	CHECK	APPD						
1	2	3	09/07/12	FOR MANUFACTURE	RCT								

1 2 3 4 5 6 7 8 9 10 11 12 A3